

# Standard Operating Procedure: Pre-inspection for Fumigation under ICA-04

## REVISION REGISTER

| Date of issue | Amendment details                                                                                                                                              |
|---------------|----------------------------------------------------------------------------------------------------------------------------------------------------------------|
| 01/06/2021    | Version 1.0                                                                                                                                                    |
| 20/09/2021    | Version 1.1                                                                                                                                                    |
| 11/10/2022    | Version 1.2: add in contact details for all AgVic locations, update 7.7 and 5 to reference new contact details, update definition to include AgVic inspectors. |
| 13/10/2023    | Version 1.3: review and update of department name.                                                                                                             |

Authorised and published by the Victorian Government  
Department of Energy, Environment and Climate Action  
8 Nicholson St, Melbourne 3000  
Telephone 136 186

© Copyright State of Victoria,  
Department of Energy, Environment and Climate Action 2023

ISBN 978-1-76090-625-2 (pdf/online/MS word)

For more information contact the Customer Service Centre 136 186.

This document is also available in PDF format on the internet at [www.agriculture.vic.gov.au](http://www.agriculture.vic.gov.au)

**Disclaimer**

This publication may be of assistance to you but the State of Victoria and its employees do not guarantee that the publication is without flaw of any kind or is wholly appropriate for your particular purposes and therefore disclaims all liability for any error, loss or other consequence which may arise from you relying on any information in this publication.

## TABLE OF CONTENTS

|   |                                          |   |
|---|------------------------------------------|---|
| 1 | Purpose                                  | 4 |
| 2 | Scope                                    | 4 |
| 3 | References                               | 4 |
| 4 | Definitions                              | 4 |
| 5 | Responsibility                           | 5 |
| 6 | Training                                 | 6 |
| 7 | Requirement                              | 6 |
|   | 7.1 Inspection equipment                 | 6 |
|   | 7.2 Records of Inspections               | 7 |
|   | 7.3 Inspection Rate                      | 7 |
|   | 7.4 Inspection of the sample             | 7 |
|   | 7.5 Failed Inspections                   | 8 |
|   | 7.6 Submission for sample identification | 8 |
|   | 7.7 Reporting                            | 8 |
|   | 7.7.1 Contact details for reporting      | 8 |
| 8 | Attachments                              | 9 |

# 1 Purpose

This procedure describes the requirements for conducting pre-fumigation inspection in accordance with the Fumigation with methyl bromide (ICA-04) procedure to meet interstate import conditions.

# 2 Scope

This procedure applies to any Inspection Person who is trained, assessed, and found competent in the signs and symptoms of fruit fly to conduct pre-fumigation inspections of high-risk commodities in accordance with the requirements of the Fumigation with methyl bromide (ICA-04) procedure.

# 3 References

Fumigation with methyl bromide (ICA-04) procedure

Plant Biosecurity Act 2010

# 4 Definitions

|                                    |                                                                                                                                                                                                                                                                                              |
|------------------------------------|----------------------------------------------------------------------------------------------------------------------------------------------------------------------------------------------------------------------------------------------------------------------------------------------|
| <b>Approved Inspection Service</b> | means a Business authorised by Agriculture Victoria under the Act.                                                                                                                                                                                                                           |
| <b>Authorised Inspector</b>        | means an inspector authorised under the Act.                                                                                                                                                                                                                                                 |
| <b>Fumigator</b>                   | means an accredited business under the ICA-04 procedure.                                                                                                                                                                                                                                     |
| <b>Crop Health Services</b>        | Crop Health Services (CHS) - diagnostic services, located at AgriBio Bundoora                                                                                                                                                                                                                |
| <b>Fruit Fly</b>                   | Includes fruit fly of concern <ul style="list-style-type: none"> <li>• Mediterranean Fruit Fly (MFF) - means all stages of the species <i>Ceratitis capitata</i></li> <li>• Queensland fruit fly (QFF) - means all life stages of the species <i>Bactrocera tryoni</i> (Froggatt)</li> </ul> |
| <b>Fruit fly infestation</b>       | means the presence of viable/live eggs or larvae of fruit fly                                                                                                                                                                                                                                |
| <b>High risk commodity</b>         | means commodities deemed as high risk for Fruit Fly, as defined by the receiving jurisdiction.                                                                                                                                                                                               |
| <b>ICA</b>                         | means Interstate Certification Assurance (ICA) arrangement.                                                                                                                                                                                                                                  |

|                                  |                                                                                                                                                                                                                             |
|----------------------------------|-----------------------------------------------------------------------------------------------------------------------------------------------------------------------------------------------------------------------------|
| <b>ICA-04</b>                    | means the Victorian Fumigation with methyl bromide (ICA-04) procedure.                                                                                                                                                      |
| <b>Inspection person</b>         | means either an Authorised Inspector or Inspection Agent, being a principal or an employee of an Approved Inspection Service and is annually trained, assessed, and found competent in the signs and symptoms of fruit fly. |
| <b>Lot</b>                       | means a discrete number of packages of one produce type (e.g., apples or mangoes) from one source (e.g. one packer).                                                                                                        |
| <b>The Act</b>                   | means the Plant Biosecurity Act 2010                                                                                                                                                                                        |
| <b>Pre-fumigation inspection</b> | means the process by which a representative sample is drawn and inspected from the chamber load prior to fumigation.                                                                                                        |

## 5 Responsibility

The **Agriculture Victoria/Approved Inspection Service** is responsible for:

- Ensuring the business and its staff comply with their responsibilities and duties under this procedure;
- Maintaining a register of Inspection Persons;

The **Inspection person** is responsible for:

- Inspecting high-risk commodities submitted by Fumigators for evidence of fruit fly infestation in accordance with the requirements below;
- Maintaining a record of all consignments submitted for inspection under this procedure;
- Providing a copy of the fruit inspection record to the fumigator as per section 7.2
- Verbally notifying Agriculture Victoria of a suspect fruit fly infestation on the day of detection;
- Collecting, labelling, and submitting all suspect fruit fly samples to Agriculture Victoria on the day of detection;
- Providing photos of suspected sample and consignment details to Agriculture Victoria (see 7.7.1) on the day of detection;
- Providing a copy of the Pre-Fumigation Inspection Record (Attachment 1) to Domestic Quarantine and Agriculture Victoria (see 7.7.1) before Tuesday of the following week.

The **Fumigator** is responsible for:

- Maintaining inspection equipment for access by the Inspection Persons to undertaken pre-fumigation inspection of high-risk product.

**Agriculture Victoria** is responsible for:

- Ensuring all suspect fruit fly samples submitted are handled in accordance with the Standard Operating Procedure for Plant Pest Sampling and Notification;
- Submitting suspect fruit fly samples to the Crop Health Services (CHS) for morphological identification;
- Providing a copy of the Fruit Fly identification report to the Authorised Inspection service (if applicable) and Fumigator on request.

## 6 Training

A register of Inspection Persons must be maintained by the Agriculture Victoria/Approved Inspection Service. The register must contain the following information for each Inspection Person:

- Inspection Person Name;
- Specimen signature of the Inspection Person;
- Date of demonstrated competency.

Inspection Persons must be assessed as competent by Agriculture Victoria at least annually.

## 7 Requirement

A pre-fumigation inspection for suspect fruit fly infestation must occur for each lot containing a high-risk commodity processed by an ICA-04 accredited business.

Inspection for suspect fruit fly must be carried out as close as practical, and not more than 48 hours prior, to the time of treatment.

High-risk commodities must be inspected by conducting a packed product inspection following assembly of a chamber load prior to treatment. The pre-fumigation inspection must be undertaken by an Inspection Person.

### 7.1 Inspection equipment

The Fumigator must maintain the following inspection equipment:

- an inspection bench or table in an area protected from adverse weather conditions which is constructed of stable, rigid and durable material i.e., steel, timber or plastic that is of a reasonable size and height which is painted in a light colour or covered in a durable light-coloured material placed in a well-lit and ventilated area on a flat sealed and durable surface i.e. concrete;
- adequate illumination;
- reference illustrations and photographs for identification of QFF.

The Inspection Person must maintain the following inspection equipment:

- a hand lens, microscope or other device that provides at least X10 magnification for the observation of suspected fruit fly;
- a white coloured tray i.e., plastic photograph tray or other surface for dislodging fruit fly into for inspection;
- reference illustrations and photographs for identification of QFF;
- sealable plastic bags for collecting specimens of infested produce;
- sealable specimen bottles for placing samples of suspected fruit fly;
- sticky labels for identification of specimens;
- a fine paint brush or other suitable equipment for collecting samples of suspected fruit fly;
- a pocketknife or similar item to further investigate for the presence of fruit fly.

## 7.2 Records of Inspections

Inspection records must include –

- date and time of inspection;
- produce type;
- grower/packer name for each inspection lot;
- town where produce is grown/packed;
- postcode where produce is grown/packed;
- number of units sampled in each inspection lot;
- inspection results including freedom or presence of suspect fruit fly;
- comments on the inspection, including any actions taken resulting from suspected detection of fruit fly;
- name and signature of Inspection Person.

## 7.3 Inspection Rate

A separate representative 600-unit inspection must be completed for each high-risk commodity in a chamber load (i.e., 600 mangoes and 600 peaches for a given chamber load) processed by an ICA-04 accredited business.

Inspection of high-risk commodities must be completed as follows:

- Inspect a random representative selection of 600-units of each high-risk commodity obtained from a minimum of three cartons for live fruit fly;
- Ensure that the selection represents an even distribution of all the high-risk commodity varieties and suppliers (growers/packers)

Example 1: If a chamber load contains three varieties of mango (from the same mango grower) and ten varieties of stone fruit (from the same stone fruit grower), then 200 units are to be inspected from each variety of mango and 60 units from each variety of stone fruit.

Example 2: If a treatment chamber contains five varieties of stone fruit from ten growers, then 60 units of stone fruit from each grower must be inspected, making sure that samples are drawn in a way that ensures a proportional sub-sample from each variety is inspected.

- Where there are less than 600 units of any high-risk product in a chamber load, all the high-risk product of that type must be inspected. Additionally, where there are not enough units to inspect from one inspection lot, the lot must be made up of fruit of the same type from other inspection lots.

Example: Where a chamber load comprises ten inspection lots of mangoes, 60 units must be inspected from each inspection lot. Where one inspection lot of mangoes in the chamber load comprises only 18 units, the additional 42 units must be inspected from across the nine other inspection lots of mangoes.

## 7.4 Inspection of the sample

Each unit in the sample must receive 100 percent inspection of the surface area. Particular attention must be paid to cracks, splits, bruises, rots, and other blemishes. Special attention must also be given to any sting marks.

Further examination for evidence of any live suspect fruit fly is required if any signs or symptoms are present.

Suspect fruit shall be cut across any damaged areas that show symptoms of suspect fruit fly infestation, then examined. The presence of moving white larvae in the flesh indicates fruit fly infestation and is deemed non-conforming product.

The Inspection Person must mark all the boxes in the inspection lot to show that they have been inspected and found free of Fruit Fly.

## 7.5 Failed Inspections

The Inspection Person must immediately advise the fumigator of any detection of suspect fruit fly identified during the inspection.

All produce from a lot with suspected fruit fly shall not be marked as described above in 7.4. The Inspection Person shall advise the fumigator that the lot must be segregated to prevent mixing with conforming produce.

## 7.6 Submission for sample identification

Samples of suspect fruit fly must be taken by an Inspection Person immediately on detection. The Inspection Person must place a sample of the suspect fruit fly in a vile and include in a plastic bag with a portion of the fruit which it was found. Care should be taken to ensure the vile and bag are fully sealed.

The sample must be labelled with the:

- name of the Inspection Person taking the sample;
- date of inspection and sample taken;
- the name and address of the grower or packer or Interstate Produce number (IP No.) from the grower or packer which the produce that the sample was taken from originated;
- commodity type from which the sample was taken.

The Inspection Person must seal the specimen bottle into a sealable plastic bag then forward the sample by secured means (e.g., hand deliver) to Agriculture Victoria within 24 hours. Agriculture Victoria will forward the samples to CHS for identification.

The Identification Report will be provided to the Authorised Inspection Service (if applicable) and Fumigator by Agriculture Victoria on request.

## 7.7 Reporting

The Inspection Person must

- notify Agriculture Victoria of any suspect fruit fly detection verbally and submit photos of the sample and consignment details via email (see 7.7.1) on the day of detection, and
- submit a weekly report of inspection details in accordance with the Pre-Fumigation Inspection Record (Attachment 1) to Domestic Quarantine and Agriculture Victoria (7.7.1) before Tuesday the following week.
- Provide the fumigator with records of inspection as per section 7.2.

### 7.7.1 Contact details for reporting

- Domestic Quarantine
  - [market.access@agriculture.vic.gov.au](mailto:market.access@agriculture.vic.gov.au)
- Agriculture Victoria - Northern Region:
  - [plant.quarantine@agriculture.vic.gov.au](mailto:plant.quarantine@agriculture.vic.gov.au)
  - 1800 878 962



- Agriculture Victoria – South-East Region:
  - [plant.standards@agriculture.vic.gov.au](mailto:plant.standards@agriculture.vic.gov.au)
  - 1800 878 962
- Agriculture Victoria – South-West Region:
  - [plant.southwest@agriculture.vic.gov.au](mailto:plant.southwest@agriculture.vic.gov.au)
  - 1800 878 962

## 8 Attachments

Attachment 1 – Pre-Fumigation Inspection Record (PSF-454)

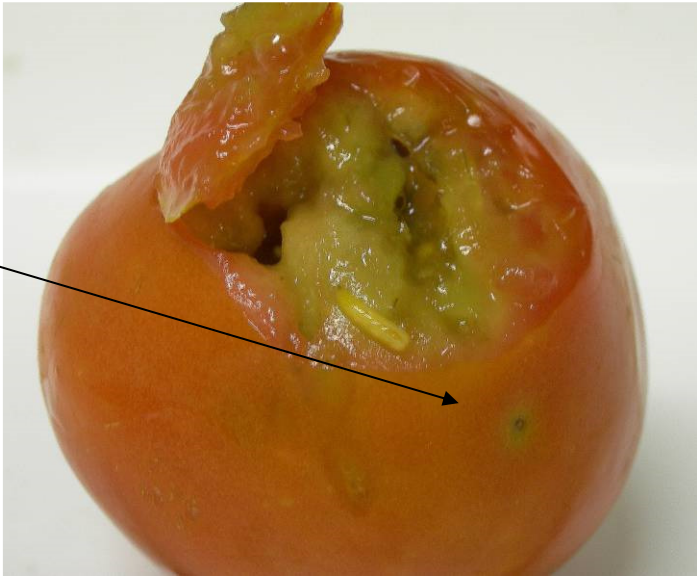
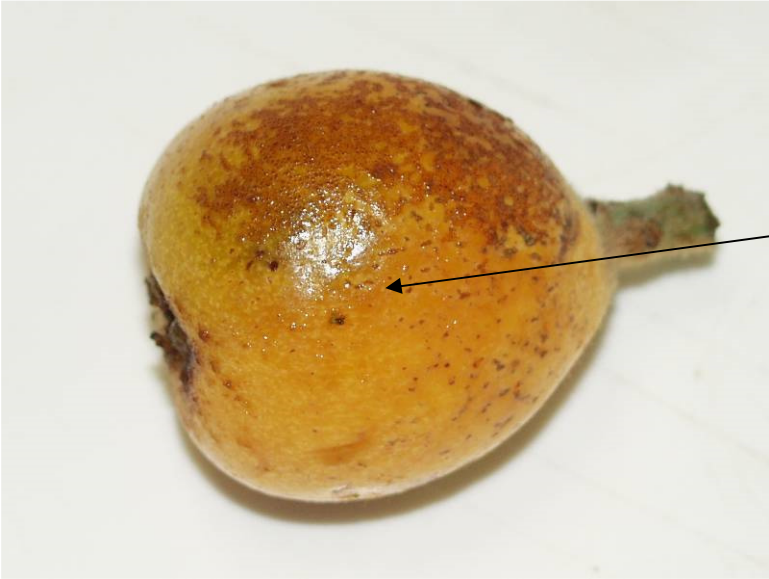
Attachment 2 – Key Personnel Training Register (PSF-069)

Attachment 3 – QFF information sheet (PSF-354)





OFFICIAL  
QUEENSLAND FRUIT FLY (QFF) LARVAE AND STING MARKS



STING MARKS



LARVAE