

AUSTRALIAN INTERSTATE QUARANTINE



A TRAVELLER'S GUIDE

Quarantine Domestic

CHECK WHAT YOU'RE CARRYING. PENALTIES APPLY.

ENJOY YOUR TRIP AND LOOK AFTER AUSTRALIA



September 2021

ISBN: 978-0-9944022-1-9

PLEASE NOTE:

This document is a guide only for private interstate travellers.

Commercial importers and exporters must follow information for producers on the Interstate Quarantine website.

Help us protect our agricultural industries and environment from pests and diseases.

Use this simple guide before you travel and keep it with you. It will help you check what you can and can't take across state and quarantine borders and avoid on-the-spot fines.

CONTENTS

State and quarantine borders	3
Key	3
NSW (including ACT)	4
Northern Territory	6
Queensland	8
South Australia	10
Tasmania	12
Victoria	14
Western Australia	16
Some of the major threats	18
Further information	19

STAY UP TO DATE:

Quarantine requirements may change as new pests, diseases and weeds are detected.

For the most up to date information, visit the Interstate Quarantine website **interstatequarantine.org.au** or telephone 1800 084 881 during business hours Mon-Fri.



AUSTRALIA'S INTERSTATE QUARANTINE AND BIOSECURITY RULES

Pests, diseases and weeds can travel with you as you visit different areas of Australia. There are restrictions on what you can take as you cross state and quarantine borders within Australia. Travellers face on-the-spot fines for taking prohibited items across borders.

Check before you travel

It's always good to check any restrictions that might apply to your trip. You can also check restrictions online at interstatequarantine.org.au or by ringing Freecall 1800 084 881 (business hours Mon-Fri)

Eat it or bin it

If you reach a border with produce that can't be taken across, eat it or bin it. There are interstate quarantine bins at some domestic airports, ferry terminals and state and quarantine zone borders. You must dispose of any restricted products at that point. That way you can be sure you're not giving a pest or disease a free ride into new areas.

The risks

Pests, diseases and weeds can be spread from one part of Australia to another through the movement of many items including:

- plant or plant products
- fruit and vegetables
- animals or animal products
- soil
- agricultural machinery and other equipment.

Following the rules about moving these items will help to minimise the risk to Australia's unique environment and valuable agricultural markets.

AUSTRALIAN STATE BORDERS



KEY TO THE TABLES



NO X

You **cannot** carry this item with you when travelling to this state or territory.



ASK !

You **need** to obtain an appropriate permit or certificate or provide more information to carry this item with you when travelling to this state or territory. Please contact the relevant authority indicated for the destination state or territory.

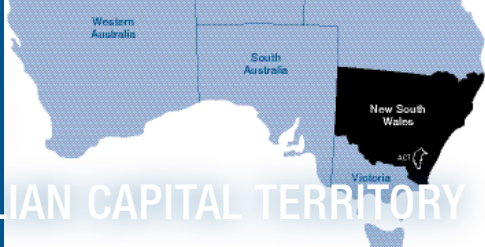


YES ✓

You **can** carry this item with you without restriction when travelling to this state or territory.

Please see interstatequarantine.org.au for a detailed map of Australian quarantine borders.

DESTINATION: NEW SOUTH WALES/AUSTRALIAN CAPITAL TERRITORY



TRAVELLING TO NSW & ACT

Please examine the listed products carefully. Although broad terms such as 'fruits and vegetables' are used, exceptions may apply.

Fruits, vegetables & nuts (products)	from:	NT	QLD	SA	TAS	VIC	WA
Fruit and vegetables (fresh)		⚠	⚠	⚠	✓	⚠	⚠
Fruit and vegetables (cooked, canned, freeze-dried, dehydrated)		✓	✓	✓	✓	✓	✓
Fruit salad (sliced fresh)		✓	✓	✓	✓	✓	✓
Herbs (fresh)		✓	✓	✓	✓	✓	⚠
Herbs & spices (dried)		✓	✓	✓	✓	✓	✓
Nuts (dried)		✓	✓	✓	✓	✓	✓
Ware potatoes and sweet potatoes		✓	✓	✓	✓	⚠	✓
Vegetable salad		✓	✓	✓	✓	✓	✓
Food items	from:	NT	QLD	SA	TAS	VIC	WA
Dairy products including milk, cheese & yoghurt (fresh & powdered)		✓	✓	✓	✓	✓	✓
Eggs		✓	✓	✓	✓	✓	✓
Fish (canned, smoked/cured)		✓	✓	✓	✓	✓	✓
Honey		⚠	⚠	⚠	⚠	⚠	⚠
Processed foods (noodles, bread, baby food, cereals, sauces, biscuits, fruit cake)		✓	✓	✓	✓	✓	✓
Meats (sausage, salami, sliced meats)		✓	✓	✓	✓	✓	✓
Rice		⚠	⚠	⚠	⚠	⚠	⚠
Tea & coffee		✓	✓	✓	✓	✓	✓
Other	from:	NT	QLD	SA	TAS	VIC	WA
Agricultural and recreational equipment (contaminated with soil)		⚠	⚠	⚠	⚠	⚠	⚠
Dogs, cats		✓	✓	✓	✓	✓	✓
Livestock (cattle, pigs, sheep, horses)		⚠	⚠	⚠	⚠	⚠	⚠
Native birds & mammals		⚠	⚠	⚠	⚠	⚠	⚠
Reptiles		⚠	⚠	⚠	⚠	⚠	⚠
Animal skins & hides		✓	✓	✓	✓	✓	✓
Boots (free of soil)		✓	✓	✓	✓	✓	✓
Fish (live)		⚠	⚠	⚠	⚠	⚠	⚠
Garden tools (free of soil)		✓	✓	✓	✓	✓	✓
Honeycomb, bees & used beekeeping equipment		⚠	⚠	⚠	⚠	⚠	⚠
Soil		✗	✗	✗	✗	✗	✗
Plant items	from:	NT	QLD	SA	TAS	VIC	WA
Banana planting material		✗	✗	✗	✗	✗	✗
Bulbs, corms (dormant)		✓	✓	✓	✓	✗	✗
Citrus plants, cuttings or budwood		⚠	✗	✓	✓	✓	⚠
Cut flowers & foliage		✓	✓	✓	✓	✓	✗
Fruit and vegetables (plants, seedlings & seeds)		⚠	⚠	⚠	✓	⚠	⚠
Grapevines, cuttings or budwood		✗	✗	✗	✗	✗	✗
Lupin plant material		✓	✓	⚠	✓	✓	⚠
Potato planting material		✗	✗	✗	✗	✗	✗
Pot plants & nursery stock		⚠	⚠	⚠	✓	⚠	⚠
Timber (raw or treated)		✓	✓	✓	✓	✓	⚠



For more information on carrying the following items into New South Wales and Australian Capital Territory, please contact:

- **Plants or plant products** – 1800 084 881 or quarantine@dpi.nsw.gov.au
- **Animals or animal products** – 1800 084 881 or quarantine@dpi.nsw.gov.au
- **Bees or bee products** – 1800 084 881 or quarantine@dpi.nsw.gov.au
- **Noxious weeds reporting** – 1800 680 244 or weeds@dpi.nsw.gov.au
- **Native birds and wildlife** – 1300 361 967 or wildlife.licensing@environment.nsw.gov.au
- **Fish or fish products** – 1300 550 474 or information-advisory@dpi.nsw.gov.au
- **Aquatic pests or exotic fish** – 1800 675 888 or aquatic.biosecurity@dpi.nsw.gov.au

TRAVELLING WITHIN NEW SOUTH WALES/AUSTRALIAN CAPITAL TERRITORY

Greater Sunraysia Pest Free Area (PFA)

Part of the far west and Murray regions. Do not take fruit (including capsicum, chilli, tomato and eggplant) into the PFA.

Phylloxera Exclusion Zone

All of NSW except for Albury/Corowa and the Sydney Basin. Do not take grapevines, cuttings or budwood into this zone. Soil that has been in contact with any grapevine material cannot be brought into this zone.

Rice Biosecurity Zone

Most of the Murrumbidgee and Murray regions. Do not bring rice plants or grain such as paddy rice or brown rice into the zone. Some other rice products are also not allowed into the zone.

Seed Potato Protected Area

Parts of the south-eastern, central west and northern regions. Do not bring potato planting material or soil that has been in contact with potato planting material into these areas.

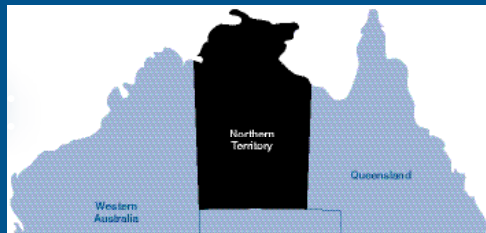
Citrus Red Mite Biosecurity Zone

Established across the Central Coast region of New South Wales, including near Gosford, the County of Northumberland and Sydney metropolitan homes in the County of Cumberland. Do not move citrus plants out of this area.

**For more information, visit the website
interstatequarantine.org.au or telephone
FREECALL 1800 084 881**

See maps at interstatequarantine.org.au/zones. For more information on legislation go to dpi.nsw.gov.au/biosecurity/managing-biosecurity/legislation

DESTINATION NORTHERN TERRITORY



TRAVELLING TO NT

Please examine the listed products carefully. Although broad terms such as 'fruits and vegetables' are used, exceptions may apply.

Fruits, vegetables & nuts (products)	from:	NSW	QLD	SA	TAS	VIC	WA
Banana		⚠	⚠	⚠	⚠	⚠	⚠
Citrus		⚠	⚠	⚠	⚠	⚠	⚠
Fruit (commercially-grown)		✓	✓	✓	✓	✓	⚠
Fruit and vegetables (cooked, canned, freeze-dried, dehydrated)		✓	✓	✓	✓	✓	✓
Fruit and vegetables (cucumber fly hosts eg zucchini, cucumber, melons, pumpkin, tomato, passionfruit)		⚠	⚠	⚠	⚠	⚠	⚠
Fruit and vegetables (home-grown)		⚠	⚠	⚠	⚠	⚠	⚠
Fruit salad (fresh)		✓	✓	✓	✓	✓	✓
Herbs (fresh)		⚠	⚠	⚠	⚠	⚠	⚠
Herbs & spices (dried)		✓	✓	✓	✓	✓	✓
Nuts (dried)		✓	✓	✓	✓	✓	✓
Pawpaw (papaya)		⚠	⚠	⚠	⚠	⚠	⚠
Potato (ware and seed)		⚠	⚠	⚠	⚠	⚠	⚠
Vegetable salad		✓	✓	✓	✓	✓	✓
Vegetables (non-leafy, commercial)		⚠	⚠	⚠	⚠	⚠	⚠
Vegetables (leafy eg lettuce)		⚠	⚠	⚠	⚠	⚠	⚠
Food items	from:	NSW	QLD	SA	TAS	VIC	WA
Dairy products including milk, cheese & yoghurt (fresh & powdered)		✓	✓	✓	✓	✓	✓
Eggs (chicken & duck)		✓	✓	✓	✓	✓	✓
Fish (fresh, canned, smoked, cured)		✓	✓	✓	✓	✓	✓
Honey		⚠	⚠	⚠	⚠	⚠	⚠
Processed foods (noodles, bread, rice, baby food, cereals, sauces)		✓	✓	✓	✓	✓	✓
Meats (sausage, salami, sliced meats)		✓	✓	✓	✓	✓	✓
Tea, coffee & biscuits		✓	✓	✓	✓	✓	✓
Other	from:	NSW	QLD	SA	TAS	VIC	WA
Dogs & cats		✓	✓	✓	✓	✓	✓
Feral animals (fox, cane toad, dingo, European carp etc)		✗	✗	✗	✗	✗	✗
Fish (domestic or aquarium)		⚠	⚠	⚠	⚠	⚠	⚠
Horses		⚠	⚠	⚠	⚠	⚠	⚠
Livestock (cattle, pigs, sheep)		⚠	⚠	⚠	⚠	⚠	⚠
Native wildlife & caged birds		⚠	⚠	⚠	⚠	⚠	⚠
Yabbies		✗	✗	✗	✗	✗	✗
Animal skins & hides		✓	✓	✓	✓	✓	✓
Fishing bait (snails, worms etc)		✗	✗	✗	✗	✗	✗
Boots (free of soil)		✓	✓	✓	✓	✓	✓
Garden tools (free of soil)		✓	✓	✓	✓	✓	✓
Soil		✗	✗	✗	✗	✗	✗
Potting mix and compost		⚠	⚠	⚠	⚠	⚠	⚠
Machinery and equipment (agricultural, earthmoving)		⚠	⚠	⚠	⚠	⚠	⚠



Plant items	from:	NSW	QLD	SA	TAS	VIC	WA
Bulbs, corms (dormant)		✓	✓	✓	✓	✓	✓
Cut flowers & foliage		⚠	⚠	⚠	⚠	⚠	⚠
Fruit and vegetables (plants & seedlings)		⚠	⚠	⚠	⚠	⚠	⚠
Grapevines, cuttings or budwood		⚠	⚠	⚠	⚠	⚠	⚠
Maize (seed)		⚠	⚠	✓	✓	✓	✓
Pot plants & nursery stock		⚠	⚠	⚠	⚠	⚠	⚠
Pinewood & pinewood products		✓	✓	✓	✓	✓	⚠
Seeds		⚠	⚠	⚠	⚠	⚠	⚠
Weeds & weed seeds		✗	✗	✗	✗	✗	✗



For more information on carrying the following items into Northern Territory, please contact:

- **Plants or plant products** – 08 8999 2118 or email plantbiosecurity@nt.gov.au
- **Livestock** – 08 8999 2030
- **Live fish** – 08 8999 2144
- **Native birds and other wildlife** – email pwpermits@nt.gov.au
- **Aquatic pests** – 08 8999 2126 or 0413 381 094
- **Fisheries** – 08 8999 2144

Note: No plant or plant product, whether listed or not, is permitted entry if found to be affected by a pest or disease.

TRAVELLING WITHIN NORTHERN TERRITORY

Movement of plant products into and/or out of the following zones is regulated

Ti Tree Fruit Fly Exclusion Zone (FFEZ)

The Ti Tree FFEZ extends from Tennant Creek to Alice Springs. Do not take fruit (including capsicum, chilli, tomato, eggplant, cucumber, zucchini and squash) into the FFEZ.

Adelaide River

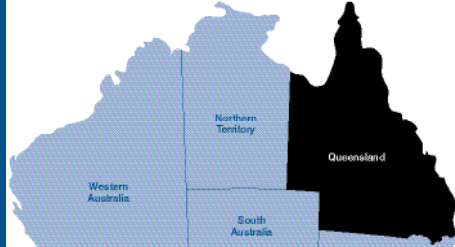
Restrictions apply to fruit and vegetables when travelling south from Darwin to prevent the spread of the pest melon thrips.

The following produce must not be carried south along the Stuart Highway beyond the Adelaide River township:

- beans
- capsicum
- chilli

- cucumber
- eggplant
- melons
- mango fruit and mango plants (unless treated against leaf hopper)
- okra
- pumpkin
- silverbeet
- squash
- tomato
- zucchini.

DESTINATION: QUEENSLAND



TRAVELLING TO QLD

Please examine the listed products carefully. Although broad terms such as 'fruits and vegetables' are used, exceptions may apply.

Fruits, vegetables & nuts (products)	from:	NSW	NT	SA	TAS	VIC	WA
Citrus fruit		✓	✓	✓	✓	✓	✗
Fruit (fresh, except banana and mango)		✓	✓	✓	✓	✓	✗
• banana fruit (must be removed from bunch stalk)		✓	✗	✓	✓	✓	✗
• mango fruit (stalks must be removed)		✓	✓	✓	✓	✓	✗
Fruit salad (fresh)		✓	✓	✓	✓	✓	✓
Fruit and vegetables (dried, cooked, frozen, canned)		✓	✓	✓	✓	✓	✓
Herbs (fresh)		✓	✓	✓	✓	✓	✓
Herbs & spices (dried)		✓	✓	✓	✓	✓	✓
Mushrooms		✓	✓	✓	✓	✓	✓
Nuts (dried)		✓	✓	✓	✓	✓	✓
Potatoes washed or brushed (soil free, for consumption, not for planting)		✓	✓	✓	✓	✓	✓
Vegetables							
• Cucurbits (eg cucumber, pumpkin, squash, zucchini)		✓	✓	✓	✓	✓	⚠
• Fruiting (eg capsicum, chilli, eggplant, tomato, tamarillo)		✓	✓	✓	✓	✓	⚠
• Leafy (eg lettuce, cabbage, cauliflower, broccoli, kale)		✓	✓	✓	✓	✓	⚠
• Root (soil free with tops removed)		✓	✓	✓	✓	✓	⚠
Food items	from:	NSW	NT	SA	TAS	VIC	WA
Camping foods (freeze-dried/dehydrated)		✓	✓	✓	✓	✓	✓
Dairy products including milk, cheese & yoghurt (fresh & powdered)		✓	✓	✓	✓	✓	✓
Eggs		✓	✓	✓	✓	✓	✓
Fish (fresh, canned, smoked, cured)		✓	✓	✓	✓	✓	✓
Honey		✓	✓	✓	⚠	✓	✓
Meats (sausage, salami, sliced meats)		✓	✓	✓	✓	✓	✓
Processed foods (eg noodles, bread, rice, cereals, baby food, fruit cake, tea)		✓	✓	✓	✓	✓	✓
Other	from:	NSW	NT	SA	TAS	VIC	WA
Animals (dogs, cats, guinea pigs, rats, mice, exotic birds)		✓	✓	✓	✓	✓	✓
Animals (fish and axolotl – aquarium not noxious)		✓	✓	✓	✓	✓	✓
Animals (fish – declared noxious)		✗	✗	✗	✗	✗	✗
Animals (pet rabbits, pet ferrets, exotic reptiles, exotic amphibians other than axolotl, exotic mammals)		✗	✗	✗	✗	✗	✗
Animals (livestock – cattle, pigs, sheep, horses)		⚠	⚠	⚠	⚠	⚠	⚠
Animals (native birds & wildlife)		⚠	⚠	⚠	⚠	⚠	⚠
Animal skins & hides		✗	✗	✓	✓	✓	⚠
Boots (free of soil and organic matter and not associated with bananas, cucurbit plants (eg cucumbers, melons), sugarcane, mangoes or grape vines)		✓	✓	✓	✓	✓	✓
Garden tools (washed and totally free of soil)		✓	⚠	✓	✓	⚠	✓
Honeycomb, bees & used beekeeping equipment, including used hives		✓	✓	✓	⚠	✓	✓
Soil or anything containing soil		✗	✗	✗	✗	✗	✗



Plant items	from: NSW	NT	SA	TAS	VIC	WA
Banana plants and seeds of Musaceae (<i>Musa</i> , <i>Musella</i> and <i>Ensete</i>)	✗	✗	✗	✗	✗	✗
Bare rooted plants	✓	✓	✓	✓	⚠	✓
Bulbs, corms etc (dormant and free of soil)	✓	✓	✓	✓	⚠	✓
Cut flowers & foliage	✓	✓	✓	✓	✓	⚠
Flower seedlings	✓	✓	✓	✓	⚠	✓
Fruit and vegetables (plants & seedlings)	⚠	⚠	⚠	⚠	⚠	⚠
Grapes, grapevines, cuttings or budwood	✗	✗	✗	✗	✗	✗
House/pot plants	⚠	⚠	⚠	⚠	⚠	⚠
Native plants	⚠	⚠	⚠	⚠	⚠	⚠
Pine family plants (<i>Pinus</i> , <i>Picea</i> , Christmas trees)	✓	✓	⚠	✓	⚠	⚠
Pine timber (dried)	✓	✓	✓	✓	✓	⚠
Plants of the <i>Saccharum</i> genus (sugarcane, pit-pit)	✗	✗	✗	✗	✗	✗
Potato planting material	✗	✗	✗	✗	✗	✗
Stock feed (hay, grains, bird food)	✓	✓	⚠	✓	✓	✓
Strawberry plants	✓	✓	✓	✓	✓	✓
Weeds & weed seeds	✗	✗	✗	✗	✗	✗



For more information on carrying the following items into Queensland, please contact:

- **Plants or plant products, skins and hides, movement of livestock, pets (except declared noxious fish), declared noxious fish** – Department of Agriculture and Fisheries customer service centre on 07 3404 6999 or callweb@daf.qld.gov.au
- www.daf.qld.gov.au/biosecurity
- **Native plants, birds and wildlife** – Environment and Heritage Protection 1300 130 372

TRAVELLING WITHIN QUEENSLAND

Movement of plant products into and/or out of areas within Queensland is regulated.

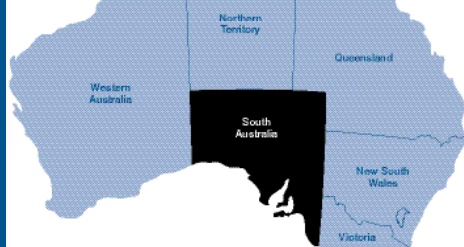
The whole of the state is a biosecurity zone for bananas, grape plants, mangoes and sugarcane. Do not take any plants, soil or items that have been in contact with these plants into Queensland.

For more information about the following biosecurity zones please contact the DAF customer service centre on 07 3404 6999.

- Banana pest biosecurity zone
- Far northern pest biosecurity zone 1 and 2
- Electric ant biosecurity zone
- Fire ant pest biosecurity zone

- Papaya ring spot biosecurity zone
- Grape Phylloxera exclusion zone – do not take grapes, grape vines, cuttings, budwood or soil from within 100m of a living grape vine into this zone.
- Sugarcane pests biosecurity zone.

DESTINATION: SOUTH AUSTRALIA



TRAVELLING TO SA

Please examine the listed products carefully. Although broad terms such as 'fruits and vegetables' are used, exceptions may apply.

Fruits, vegetables & nuts (products)	from: NSW	NT	QLD	TAS	VIC	WA
Asparagus	✓	✓	✓	✓	✓	⚠
Fruit (fresh)	✗	✗	✗	✓	✗	✗
Fruit and vegetables - processed (dried, preserved, cooked, frozen, canned)	✓	✓	✓	✓	✓	✓
Herbs (fresh cut)	✓	✓	✓	✓	✓	⚠
Herbs and spices (dried)	✓	✓	✓	✓	✓	✓
Melons (watermelon, rockmelon, honeydew)	⚠	⚠	⚠	✓	✓	⚠
Mushrooms	✓	✓	✓	✓	✓	✓
Nuts (dried)	✓	✓	✓	✓	✓	✓
Onions, garlic cured, topped and tailed	✓	✓	✓	✓	✓	✓
Onions, garlic, leeks, spring onions, chives (fresh)	✓	✓	✓	✓	✓	⚠
Pineapple	✓	✓	✓	✓	✓	✓
Potatoes washed or brushed (soil free – ware, not for planting)	✓	✓	✓	✓	✓	⚠
Spinach, silver beet	⚠	⚠	⚠	✓	✓	⚠
Vegetables - cucurbits (cucumber, pumpkin, squash, zucchini)	⚠	⚠	⚠	✓	✓	⚠
Vegetables - fruiting (capsicum, chilli, eggplant, tomato, tamarillo)	✗	✗	✗	✓	✗	✗
Vegetables - leafy (lettuce, cabbage, cauliflower, broccoli, kale)	✓	✓	✓	✓	✓	⚠
Vegetables - root, soil-free with tops removed (carrot, turnip, parsnip, beetroot, sweet potato)	✓	✓	✓	✓	✓	✓
Food items	from: NSW	NT	QLD	TAS	VIC	WA
Camping food (freeze-dried, dehydrated), eggs	✓	✓	✓	✓	✓	✓
Dairy products (eg milk, cheese and yoghurt)	✓	✓	✓	✓	✓	✓
Fish (fresh, canned)	✓	✓	✓	✓	✓	✓
Fruit salad (fresh)	✗	✗	✗	✓	✗	✗
Honey, honeycomb, beeswax, pollen, bees, hives, used equipment	⚠	⚠	⚠	⚠	⚠	⚠
Meats (poultry, sausage, salami, sliced meats)	✓	✓	✓	✓	✓	✓
Processed foods (eg noodles, bread, rice, cereals, baby food, biscuits, cakes)	✓	✓	✓	✓	✓	✓



For more information on carrying the following items into South Australia, please contact:

- **Fruit, vegetables, plant material, bee products and bee equipment** – 08 8207 7820
- **Aquarium/exotic fish and plants** – 1800 065 522
- **Livestock and animal health enquiries** – 08 8207 7900
- **Native animals:** Fauna Permits 08 8124 4972
- **Exotic pets/animals** – Invasive Species Unit 08 8429 0823

Note: Produce status can be affected by transiting through other states. In addition to the origin of any produce, you must also take into account the advice for the state in which you last travelled before entering South Australia.



Other	from: NSW	NT	QLD	TAS	VIC	WA
Animals (dogs, cats) domestic	✓	✓	✓	✓	✓	✓
Cartons (fruit and vegetable, used for packaging containers)	✓	✓	✓	✓	✓	✓
Eggs (poultry hatching)	✓	✓	✓	✓	✓	✓
Live Pacific oysters	✓	✓	✓	✗	✓	✓
Soil (dirt)	✗	✗	✗	✗	✗	✗
Stock feed (hay, fodder)	✓	✓	⚠	✓	⚠	⚠
Plant items	from: NSW	NT	QLD	TAS	VIC	WA
Bulbs, corms (dormant)	✓	✓	✓	✓	✓	⚠
Citrus plants (no fruit or soil, commercial potting mix only)	⚠	⚠	✗	⚠	✓	⚠
Cut flowers (excluding Myrtaceae)	⚠	⚠	⚠	⚠	⚠	⚠
Date palms	✓	⚠	⚠	✓	⚠	⚠
Fruit and vegetable plants including seedlings	⚠	⚠	⚠	⚠	⚠	⚠
Grapevines, cuttings, budwood	✗	✗	✗	✗	✗	✗
House/pot plants and cuttings/nursery stock/potted herbs	⚠	⚠	⚠	⚠	⚠	⚠
Pine timber (dried)	⚠	⚠	⚠	⚠	⚠	⚠
Wood (firewood and ornamental, dried & bark-free)	✓	✓	✓	✓	✓	✓
Seeds (edible or sprouting) not maize for planting	✓	✓	✓	✓	✓	✓

TRAVELLING WITHIN SOUTH AUSTRALIA

Kangaroo Island

Do not take rabbits, bees or bee products onto the island. Potatoes are also prohibited unless they have been washed or brushed free of soil and are in new packaging.

Riverland of South Australia

Do not take fresh, unprocessed fruit and fruiting vegetables (including capsicum, chilli, tomato and eggplant) into the Riverland of South Australia

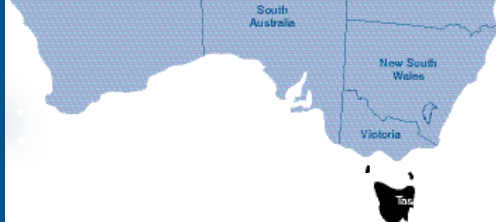
South Australian Quarantine Checkpoints

Quarantine stations and fruit disposal bins are strategically placed throughout South Australia. Mobile quarantine stations can operate anywhere and at anytime within South Australia.

South Australia's Riverland region is a recognised Pest Free Area and zero tolerance measures are in place at the Yamba Quarantine Station and at random roadblocks.

If caught with uncertified fruit or fruiting vegetables, travellers can face significant fines and penalties. Eat or dispose of produce in roadside disposal bins before approaching the Yamba Quarantine Station.

DESTINATION TASMANIA



TRAVELLING TO TASMANIA

Please examine the listed products carefully. Although broad terms such as 'fruits and vegetables' are used, exceptions may apply.

Fruits, vegetables & nuts (products)	from:	NSW	NT	QLD	SA	VIC	WA
Fruit and vegetables (fresh)		⚠	⚠	⚠	⚠	⚠	⚠
Fruit and vegetables (cooked, hard frozen, canned, preserved, dried commercially)		✓	✓	✓	✓	✓	✓
Fruit salad (fresh)		✗	✗	✗	✗	✗	✗
Herbs (fresh)		⚠	⚠	⚠	⚠	⚠	⚠
Herbs & spices (dried & non-viable)		✓	✓	✓	✓	✓	✓
Nuts (dried only)		✓	✓	✓	✓	✓	✓
Onions, shallots, chives, garlic		⚠	⚠	⚠	⚠	⚠	⚠
Potatoes (fresh or seed)		✗	✗	✗	✗	✗	✗
Seeds (all) (peas, lupin, chickpeas & canola have specific import requirements)		⚠	⚠	⚠	⚠	⚠	⚠
Food items	from:	NSW	NT	QLD	SA	VIC	WA
Camping foods (freeze-dried, dehydrated)		✓	✓	✓	✓	✓	✓
Dairy products including milk, cheese & yoghurt (fresh & powdered)		✓	✓	✓	✓	✓	✓
Eggs		✓	✓	✓	✓	✓	✓
Fish (canned)		✓	✓	✓	✓	✓	✓
Fish (flake, snapper, coral trout, barramundi, tuna, whiting, trevally, ling, squid, prawns, crab meat, crayfish) (fresh/frozen, whole/fillets)*		✓	✓	✓	✓	✓	✓
Fish (salmon, trout, eel, hake, cod, perch, mullet, flounder, bream, flathead, sardine); shellfish (oysters, clams, mussels, abalone (dead or alive)		✗	✗	✗	✗	✗	✗
Honey** (must be declared to Biosecurity Officers)		✓	✓	✓	✓	✓	✓
Meats (poultry, sausage, salami, sliced meats)		✓	✓	✓	✓	✓	✓
Meats (pork, lamb, beef - for personal consumption)		✓	✓	✓	✓	✓	✓
Processed foods (noodles, bread, rice, cereals, baby food, biscuits, fruit cake, pastries, jams, sauces)		✓	✓	✓	✓	✓	✓
Tea & coffee		✓	✓	✓	✓	✓	✓
Other foods: sandwiches, pizza, fish & chips, souvlakis, hamburgers, pasta, sweet/savoury rolls, pies, sushi		✓	✓	✓	✓	✓	✓
Other	from:	NSW	NT	QLD	SA	VIC	WA
Agricultural equipment contaminated with plant material or soil		✗	✗	✗	✗	✗	✗
Animals (cats, horses, guinea pigs, zebra finch, budgerigars, cockatiels, canaries and domestic fowls)		✓	✓	✓	✓	✓	✓
Animals (dogs - treated for hydatid tapeworm prior to arrival, inspected & found free of ticks within 24 hours of arrival)		⚠	⚠	⚠	⚠	⚠	⚠
Animals (feral - eg fox, cane toad, European carp, Indian myna etc)		✗	✗	✗	✗	✗	✗
Animals (fish - freshwater or marine)							
• Private or commercial imports		⚠	⚠	⚠	⚠	⚠	⚠
• Fishing bait (snails, worms etc)		✗	✗	✗	✗	✗	✗
• Fish products		⚠	⚠	⚠	⚠	⚠	⚠
• Goldfish		✗	✗	✗	✗	✗	✗

* Seafood must be labelled with scientific and common names

** Honey must be free of wax and bee debris



Other continued	from:	NSW	NT	QLD	SA	VIC	WA
Animals (livestock - cattle, pigs, sheep)		⚠	⚠	⚠	⚠	⚠	⚠
Animals (native wildlife, aviary birds)		⚠	⚠	⚠	⚠	⚠	⚠
Animals (pigeons, poultry & hatching eggs)		✓	✓	✓	✓	✓	✓
Animals (reptiles, amphibians, ferrets)		✗	✗	✗	✗	✗	✗
Animals (yabbies/freshwater crayfish)		✗	✗	✗	✗	✗	✗
Animal skins & hides (untanned)		⚠	⚠	⚠	⚠	⚠	⚠
Boots (free of soil)		✓	✓	✓	✓	✓	✓
Fishing & diving equipment inc. boats & waders (marine or freshwater), clean & dry		⚠	⚠	⚠	⚠	⚠	⚠
Garden tools (free of soil)		✓	✓	✓	✓	✓	✓
Honeycomb, bees & used beekeeping equipment		✗	✗	✗	✗	✗	✗
Soil or anything containing soil		✗	✗	✗	✗	✗	✗
Plant items	from:	NSW	NT	QLD	SA	VIC	WA
Bulbs, corms		⚠	⚠	⚠	⚠	⚠	⚠
Cut flowers & foliage		⚠	⚠	⚠	⚠	⚠	⚠
Fruit and vegetables (plants, seedlings & seeds)		⚠	⚠	⚠	⚠	⚠	⚠
Grapevines, cuttings or budwood		⚠	⚠	⚠	⚠	⚠	⚠
House/pot plants & nursery stock		⚠	⚠	⚠	⚠	⚠	⚠
Stock feed (hay, grain, birdseed/sticks, pelletised feed)		⚠	⚠	⚠	⚠	⚠	⚠
Timber & timber products (untreated, including firewood) not inc. furniture		⚠	⚠	⚠	⚠	⚠	⚠
Weeds & weed seeds		✗	✗	✗	✗	✗	✗



For more information on carrying the following items into Tasmania, please contact 03 6165 3777 or email biosecurity.tasmania@dpiwpe.tas.gov.au

- **Plants or plant products and seafood**
- **Fish, fish products and fishing/diving equipment (marine and freshwater)**
- **Livestock/pets/domestic animals (including livestock restrictions applying to Bass Strait Islands – Biosecurity Vet)**
- **Dogs (treatment for hydatid tapeworm prior to arrival) – 1800 684 215**
- **Native wildlife (reptiles, birds, mammals, insects) and aviary birds – 03 6165 4305 or email Wildlife Permits Officer wildlife.reception@dpiwpe.tas.gov.au**

Please note: Taking rabbits to King, Flinders and other Bass Strait Islands is prohibited.

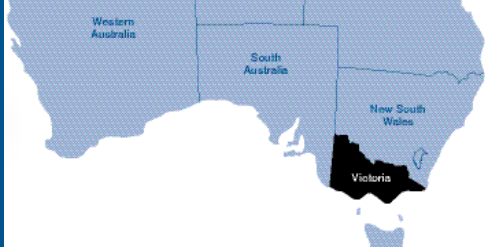
Tasmanian biosecurity checkpoints

Plant and animal biosecurity examinations are conducted at all points of entry into Tasmania. On-the-spot fines apply for both commercial and non-commercial imports.

Cat restrictions

If you own, acquire, breed or sell a cat in Tasmania provisions under the Cat Management Act 2009 apply. Microchipping and desexing now required.

DESTINATION: VICTORIA



TRAVELLING TO VICTORIA

Please examine the listed products carefully. Although broad terms such as 'fruits and vegetables' are used, exceptions may apply.

Fruits, vegetables & nuts (products)	from:	NSW	NT	QLD	SA	TAS	WA
Asparagus		✓	✓	⚠	⚠	⚠	⚠
Fruit (fresh)		⚠	⚠	⚠	⚠	⚠	⚠
Fruit salad (fresh)		✓	✓	✓	✓	✓	✓
Fruit and vegetables (dried, dehydrated, freeze-dried, cooked, frozen, canned)		✓	✓	✓	✓	✓	✓
Grapes (table)		⚠	⚠	⚠	⚠	⚠	⚠
Herbs (fresh)		✓	✓	✓	✓	✓	⚠
Herbs & spices (dried)		✓	✓	✓	✓	✓	✓
Nuts (dried)		✓	✓	✓	✓	✓	✓
Vegetables (leafy eg lettuce, cabbage)		✓	✓	⚠	✓	✓	⚠
Vegetables (root eg carrot, parsnip)		✓	✓	✓	✓	✓	⚠
Vegetable salad		✓	✓	✓	✓	✓	✓
Food items	from:	NSW	NT	QLD	SA	TAS	WA
Dairy products including milk, cheese & yoghurt (fresh & powdered)		✓	✓	✓	✓	✓	✓
Eggs		✓	✓	✓	✓	✓	✓
Fish (fresh, canned, smoked, cured)		✓	✓	✓	✓	✓	✓
Honey		⚠	⚠	⚠	⚠	⚠	⚠
Meats (sausage, salami, sliced meats)		✓	✓	✓	✓	✓	✓
Processed foods (noodles, bread, rice, cereals, baby food, biscuits, fruit cake)		✓	✓	✓	✓	✓	✓
Other	from:	NSW	NT	QLD	SA	TAS	WA
Animals (dogs & cats)		✓	✓	✓	✓	✓	✓
Boots (free of soil)		✓	✓	✓	✓	✓	✓
Garden tools (free of soil)		✓	✓	✓	✓	✓	✓
Honeycomb, bees & used beekeeping equipment		⚠	⚠	⚠	⚠	⚠	⚠
Soil		⚠	⚠	⚠	⚠	⚠	⚠
Used agricultural equipment		⚠	⚠	⚠	⚠	⚠	⚠
Plant items	from:	NSW	NT	QLD	SA	TAS	WA
Bulbs, corms		✓	✓	✓	✓	✓	⚠
Cut flowers & foliage		⚠	⚠	⚠	⚠	✓	⚠
Fruit & vegetables (plants, seedlings & seeds)		⚠	⚠	⚠	⚠	⚠	⚠
Grapevines, cuttings or budwood		⚠	✓	⚠	✓	✓	⚠
House/pot plants & nursery stock		⚠	⚠	⚠	⚠	⚠	⚠
Stock feed (hay, grains, bird food)		⚠	✓	⚠	⚠	✓	⚠
Timber (raw or treated)		✓	✓	✓	✓	✓	⚠
Weeds & weed seeds		⚠	⚠	⚠	⚠	⚠	⚠



For more information on items you wish to carry into Victoria, please contact:
Agriculture Victoria – 136 186 or visit www.agriculture.vic.gov.au/psb

TRAVELLING WITHIN VICTORIA

Movement of plant products in and out of the following zones is regulated

Greater Sunraysia Pest Free Area

The Greater Sunraysia Pest Free Area (PFA) was established to protect fruit production areas along the Murray River from Queensland fruit fly.

Do not take fruit or fruiting vegetables (including capsicum, chilli, tomato and eggplant) into the PFA. Fruit disposal bins are in place and quarantine roadblocks may operate in this zone. Signs on major roads indicate when you are entering the PFA.

Phylloxera Control Areas

Control areas have been established in Victoria to prevent the spread of the grapevine pest phylloxera. Signs on major roads indicate when you are entering a Phylloxera Exclusion Zone or leaving a Phylloxera Infested Zone, and that restrictions on the movement of grapevines exist for each zone.

Potato Plant Protection Districts

Potato Plant Protection Districts (PPDs) are established around some Victorian seed potato production regions in order to reduce biosecurity threats. Signs on major roads indicate when you are entering a PPD and what restrictions on potato movement apply.

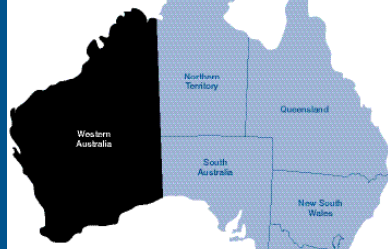
Toolangi Plant Protection District

The Toolangi Plant Protection District is a protected area in which plant breeding programs are conducted. The entry of plants for propagation into this area is restricted.

For more information about these zones, please contact Agriculture Victoria on 136 186 or visit www.agriculture.vic.gov.au/psb

FREECALL 1800 084 881

DESTINATION: WESTERN AUSTRALIA



TRAVELLING TO WA

Please examine the listed products carefully. Although broad terms such as 'fruits and vegetables' are used, exceptions may apply.

Fruits, vegetables & nuts (products)	from:	NSW	NT	QLD	SA	TAS	VIC
Fruit and vegetables (fresh)		⚠️	⚠️	⚠️	⚠️	⚠️	⚠️
• <u>exceptions</u> (providing they are free of soil, pests, disease and any sprouting green growth or material): beetroot, carrot, coconut, corn on the cob, ginger, mushrooms (commercially packaged), parsnip, pineapple, swede, galangal, sweet potato, taro, turnip		✅	✅	✅	✅	✅	✅
Fruit and vegetables (frozen or commercially dried or packed)		✅	✅	✅	✅	✅	✅
• <u>excluding</u> muntries, ribberries, grapes, guava, mango (with seed), uncooked banana leaves and unpeeled onions, garlic and potatoes		❌	❌	❌	❌	❌	❌
Fruit and vegetables (cooked)		✅	✅	✅	✅	✅	✅
Nuts (raw walnuts in shell)		❌	❌	❌	❌	❌	❌
Nuts (other)		✅	✅	✅	✅	✅	✅
Food items	from:	NSW	NT	QLD	SA	TAS	VIC
Dairy products		✅	✅	✅	✅	✅	✅
Eggs		✅	✅	✅	✅	✅	✅
Herbs (fresh cut, free of soil, pests & diseases)		❌	❌	❌	❌	❌	❌
Herbs & spices (commercially dried, except cloves)		✅	✅	✅	✅	✅	✅
Honey & other hive products (unless certified as heat-treated)		❌	❌	❌	❌	❌	❌
Lentils, split peas, beans (split or processed)		✅	✅	✅	✅	✅	✅
Meat products (fresh, frozen, dried or processed)		✅	✅	✅	✅	✅	✅
Seafood (fish for consumption)		✅	✅	✅	✅	✅	✅
Seafood (other)		⚠️	⚠️	⚠️	⚠️	⚠️	⚠️
Processed foods (biscuits, fruit cake, fruit juice, cordial, polished rice, cereals, bread, chips, baby food, jams, pickles, soups)		✅	✅	✅	✅	✅	✅
Processed items (flour, sugar, tinned F&V, rice milled)		✅	✅	✅	✅	✅	✅
Rice (unmilled)		❌	❌	❌	❌	❌	❌
Seeds (edible – commercially packaged up to 5 kg)		⚠️	⚠️	⚠️	⚠️	⚠️	⚠️
• <u>exceptions</u> : pumpkin, sun flower, pepita, chia seed		✅	✅	✅	✅	✅	✅
Tea & coffee (commercially packaged, beans)		✅	✅	✅	✅	✅	✅
Truffles (for consumption – free of soil, pests, disease)		⚠️	⚠️	⚠️	⚠️	⚠️	⚠️
Other	from:	NSW	NT	QLD	SA	TAS	VIC
Animals (birds/fish/aquariums/wildlife): pets or other		⚠️	⚠️	⚠️	⚠️	⚠️	⚠️
Animals (domestic: cats & dogs)		✅	✅	✅	✅	✅	✅
Animals skins & hides (free of plant material, seeds, soil & pests)		✅	✅	✅	✅	✅	✅
Animals (livestock eg cattle, pigs, sheep, horses)		⚠️	⚠️	⚠️	⚠️	⚠️	⚠️
Birdseed		❌	❌	❌	❌	❌	❌
Bees & apiary equipment		❌	❌	❌	❌	❌	❌
Containers (agricultural/horticultural; used, including bags, cartons, fruit boxes and potato sacks)		❌	❌	❌	❌	❌	❌
Crustaceans (including bait crustaceans eg bait prawns)		❌	❌	❌	❌	❌	❌
Soil (including in plant pots)		❌	❌	❌	❌	❌	❌



Plant items	from:	NSW	NT	QLD	SA	TAS	VIC
Bulbs		⚠	⚠	⚠	⚠	⚠	⚠
Cut flowers & foliage		⚠	⚠	⚠	⚠	⚠	⚠
Garden/house/pot plant		⚠	⚠	⚠	⚠	⚠	⚠
Seeds		⚠	⚠	⚠	⚠	⚠	⚠
Stock feed (hay/fodder)		✗	✗	✗	✗	✗	✗
Timber (dressed/without bark)		✓	✓	✓	✓	✓	✓
Wood (firewood: dried & bark-free)		✓	✓	✓	✓	✓	✓
Wood (ornamental: dried & bark-free)		✓	✓	✓	✓	✓	✓



For more information on carrying items into Western Australia, please contact:

Quarantine WA – Department of Primary Industries and Regional Development –
08 9334 1800 or qwa.import@dpir.wa.gov.au

Department of Biodiversity, Conservation and Attractions (DBCA) – 08 9219 9831 or
wildlifelicencing@dbca.wa.gov.au

- **Aviary birds**
- **Native animals (reptiles, birds, mammals, insects).**

TRAVELLING WITHIN WESTERN AUSTRALIA

Broome area

Movement of palm plants and palm foliage from the Broome area is restricted.

Kununurra and Carnarvon areas

Movement of banana plants (except fruit), leaves, and soil from the Carnarvon and Kununurra areas is restricted.

Banana containers from areas infested with Panama disease (tropical race 4) are not allowed into the Carnarvon and Kununurra areas.

Ord River Irrigation Area (ORIA – near Kununurra)

There are restrictions on the movement of cut flowers and foliage, fruit, plants and vegetables from the ORIA.

From 1 April to 30 November each year, there are restrictions on the movement of citrus and stone fruit into the Ord River Irrigation Area.

Kimberley division

There are restrictions on the entry of nursery stock, cut flowers and foliage, and leafy vegetables into the Kimberley division.

Potato growing areas (Gingin and South West)

Potatoes imported into WA from another State/Territory have restrictions on entry into WA potato growing areas.

For more information go to agric.wa.gov.au/quarantine

SOME MAJOR THREATS

Red imported fire ant (*Solenopsis invicta*)

Threat: Red imported fire ants inflict a fiery sting, which may cause an allergic reaction. Invasions can make recreational areas unusable and damage native flora and fauna and pets.

Spread: By the movement of infested materials such as pot plants, soil, mulch and timber.



Red imported fire ant. DAFF Qld (Peter Green)

Queensland fruit fly (*Bactrocera tryoni*)

Threat: The feeding of Queensland fruit fly larvae (maggots) makes fruit inedible, lowering production and severely affecting trade to sensitive markets.

Spread: By the movement of uncertified host fruit out of infested areas. Most fresh fruits, including capsicum, chillies and tomatoes, are fruit fly hosts.

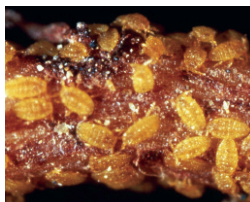


Queensland fruit flies. DEPI Vic

Grape phylloxera (*Daktulosphaira vitifoliae*)

Threat: The feeding of the phylloxera aphid on grapevine roots causes vines to decline and possibly die. It can also affect market access for the viticulture industry.

Spread: By the movement of grapevine rootlings, equipment and soil from infested areas.



Phylloxera aphids. DEPI Vic

Green snail (*Cantareus apertus*)

Threat: Green snail can significantly damage a wide range of plants, including most leafy vegetables, cereal crops, lupins, pasture grasses and native plants.

Spread: By the movement of host plant material.

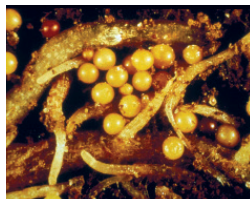


Green snail. DAF WA

Potato cyst nematode (*Globodera rostochiensis*)

Threat: Potato cyst nematode (PCN) feeds on the roots of potatoes, tomatoes and related crops, reducing crop yields and resulting in trade restrictions.

Spread: By the movement of host plants or of soil attached to plants, bulbs, advanced trees or agricultural equipment.



PCN-infested potato roots. DEPI Vic.

European house borer (*Hylotrupes bajulus*)

Threat: European house borer (EHB) larvae chew through the wood of seasoned coniferous timber and can cause major structural damage to buildings and furniture.

Spread: By the movement of infested host timber, including building materials, wooden pallets and pine furniture.



(L-R) EHB larva, male adult and female adult. DAF WA

Further information on pests and diseases of quarantine importance is available at interstatequarantine.org.au



FURTHER INFORMATION

New South Wales and Australian Capital Territory

NSW Department of Primary Industries
105 Prince St, Orange NSW 2800

Ph: 1800 680 244

Email: quarantine@dpi.nsw.gov.au

Website: www.dpi.nsw.gov.au



Northern Territory

Department of Primary Industry and Resources
Biosecurity & Product Integrity Division

NT Quarantine

GPO Box 3000, Darwin NT 0801

Ph: 08 8999 2118 **Fax:** 08 8999 2010

Email: quarantine@nt.gov.au

Website: www.nt.gov.au



Northern Territory Government

Queensland

Department of Agriculture and Fisheries

Biosecurity Queensland

GPO Box 46, Brisbane QLD 4001

Ph: 13 25 23

Email: info@daf.qld.gov.au

Website: www.biosecurity.qld.gov.au



South Australia

Primary Industries and Regions

Biosecurity SA – Plant Health

33 Flemington St, Glenside SA 5065

Ph: 08 8207 7820 **Fax:** 08 8207 7844

Email: pirs.planthealth@sa.gov.au

Website: www.pir.sa.gov.au



Government of South Australia

Primary Industries and Regions SA

Tasmania

Department of Primary Industries, Parks,
Water and Environment

13 St. Johns Ave, New Town TAS 7008

Ph: 03 6165 3777 **Fax:** 03 6173 0225

Email: biosecurity.tasmania@dpiwve.tas.gov.au

Website: www.dpiwve.tas.gov.au/biosecurity/quarantine-tasmania



Tasmania

Explore the possibilities

Victoria

Agriculture Victoria

Box 4, Melbourne Markets Admin Building

55 Produce Rd, Epping VIC 3076

Ph: 136 186

Email: plant.standards@ecodev.vic.gov.au

Website: www.agriculture.vic.gov.au/psb

AGRICULTURE VICTORIA



Western Australia

Department of Primary Industries and Regional
Development

Quarantine WA

Locked Bag 69 Welshpool DC, WA 6986

Level 1, 24 Fricker Rd, Perth Airport WA 6105

Ph: 08 9334 1800 **Fax:** 08 9334 1888

Email: followup@dpird.wa.gov.au

Website: www.agric.wa.gov.au/quarantine



Department of
Primary Industries and
Regional Development

Do not take fruit, vegetables, plants or flowers across
State and quarantine borders. **PENALTIES APPLY.**

Jangan membawa buah-buahan, sayur-sayuran, tanaman
atau bunga melawati batas-batas negara bagian dan
karantina. **DENDA DIBERLAKUKAN**

Está prohibido pasar frutas, verduras, plantas y flores
al otro lado de los límites estatales y los de cuarentena.
SE IMPONDRÁN MULTAS.

لا تدقل الفواكه، الخضروات، النباتات أو الزهور عبر حدود
الولايات أو حدود الحجر الصحي. **تفرض الغرامات.**

不要把水果、蔬菜、植物或鲜花帶過州和
檢疫邊境。違者受罰。

州境界及び檢疫線を越えて果物、野菜、植物または花を
持ち込まないでください。違反者には罰則が適用されます。



**IF IN DOUBT,
THROW IT OUT**



For more information, visit the website
interstatequarantine.org.au
or telephone Freecall 1800 084 881

Quarantine Domestic

FOR MORE INFORMATION CALL
1800 084 881